

Swiss Manager Pro UIQ2 User Guide

Purpose

Swiss Manager is a composite system utility for UIQ smartphones. It provides task manager, file manager and system information services, giving you more access to and more knowledge about your phone. Swiss Manager can be considered as an essential addition to your UIQ phone.

Compatibility

Swiss Manager Pro UIQ2 can be executed on smartphones running on Symbian 7.0 with UIQ 2.0 or 2.1. Compatible devices include the SonyEricsson P910, P900, P800, and Motorola A1000, A925, A920 phones.

Installation

The distribution package can be installed directly by using the PC install program, or after uploading the .sis file to the phone. Refer to your phone's User Guide for details on installing.

General

Swiss Manager has three separate views, each representing one of its three distinct functions. You can switch between the *Task*, *File* and *System* views by tapping their respective tab on the screen, or by the left/right arrow keys. At the bottom of the screen there is a button bar that provides fast access to the most frequently used commands for each view. Additional commands are present in the main menu of Swiss Manager.

Status icon

Swiss Manager features a Status icon that floats over other windows and is always visible on the screen.



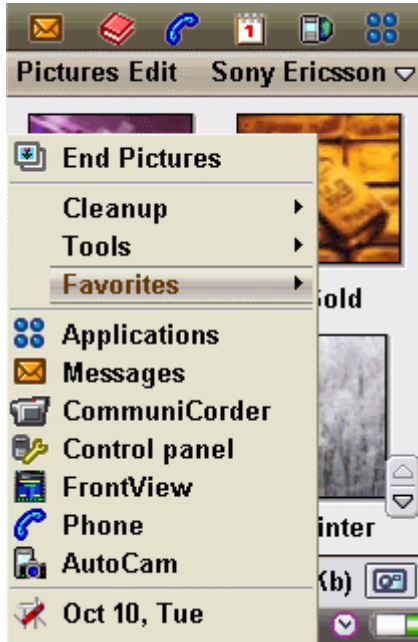
The lower part of the icon displays the current time.

The upper part has two overlapping bars: the green bar shows the percentage of used RAM, and the cyan bar shows CPU usage. The RAM bar turns red when the amount of memory usage reaches a critical level. Icon colors can be changed in *Settings/Icon*

The icon can be moved with the stylus to any screen location. Tapping on the icon brings up the *Task menu*.

Task menu

The Task menu is activated by tapping on the *Status icon*. It provides instant access to the most important task management functions, even when Swiss Manager is in the background.

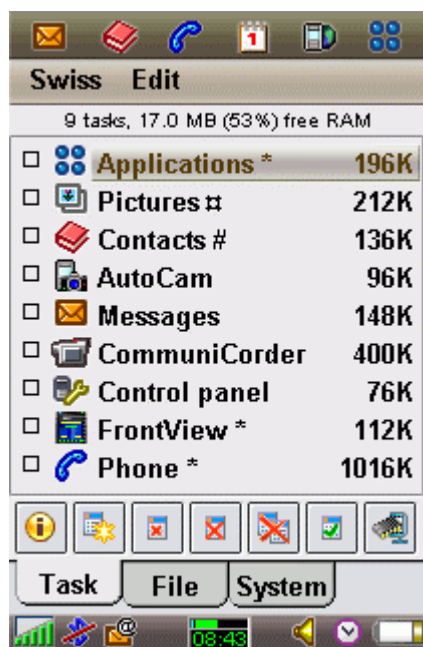


The menu consists of the following items, from the top to the bottom:

- **End [application]:** Exit the application currently in foreground.
 - **Cleanup/End all apps:** Exit all running applications.
 - **Cleanup/End background:** Exit all applications running in the background, leaving the foreground application active.
 - **Cleanup/Reclaim memory:** Maximize the amount of free memory without ending tasks.
 - **Tools/Lock icon:** Fix the *Status icon* at its current screen position.
 - **Tools/Hide icon:** Make the *Status icon* temporarily invisible. To unhide the icon, bring Swiss Manager to fore- and then to background. When the *Remember icon hide* option is on, the icon will be visible again as soon as to switch to another application, but will be hidden again automatically when the original application comes to foreground.
 - **Favorites:** Displays a list of the most frequently used applications that are currently not running, for convenient launch.
 - **[Task list]:** List of currently running applications. Tapping the items will switch to the respective application. The bottom item represents Swiss Manager.
-

Task view

The Task view lists currently running programs along with their memory consumption in kilobytes. System tasks that are not to be closed under normal circumstances are marked by an * asterisk. Tasks that are excluded from the *End all tasks* command are marked by a # sign. Applications over which the *Status icon* is auto-hidden are marked by a # sign.



Commands available for the Task view are the following:

- **Task info:** Bring up the *Task information dialog*, displaying detailed information about the selected task.
 - **Switch to task:** Bring the selected task to foreground. You can also switch to a running task by tapping on its name on the task list.
 - **End task:** Request the selected task or all marked tasks to perform their normal shutdown process. Programs that are essential for the phone's normal operation can not be exited.
 - **Kill task:** Attempt to end the selected task immediately. Only use this option if a task can not be exited normally, via the *End task* function.
 - **End all tasks:** Extend the *End task* command to all running tasks. Use this option when you do not work with the currently running programs any more and want to release all possible memory.
 - **Toggle exclusion:** Toggle the participation of the selected task in the *End all tasks* command. Exclude those tasks that you want to preserve running when a manual or automatic *End all tasks* command is issued.
 - **Reclaim memory:** Maximize the amount of free memory without ending tasks.
 - **Reset icon hide:** Revert auto-hiding the *Status icon* over the selected application. This command is available in the menu when an auto-hiding application is selected in the task list.
-

File view

The File view lets you navigate the file system of the phone. The size of files is indicated on the right in bytes (or Mega/Kilobytes, depending on their magnitude).

To enter a displayed folder, tap on its name on the list.

To go one level up in the directory hierarchy, tap on the uppermost ".." item or use the *Folder up* button.

To invoke the associated viewer application for a file, tap on its name on the list.



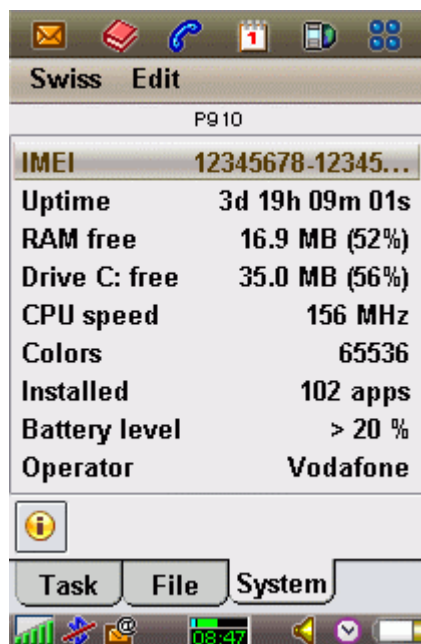
Commands available for the File view are the following:

- **File info:** Brings up the *File/Folder information dialog* that displays information about the selected file or folder. You can rename the file or folder using this dialog.
 - **Folder up:** Display the folder one level upwards.
 - **Cut:** Prepare the selected or marked files and/or folders for moving to another location.
 - **Copy:** Prepare the selected or marked files and/or folders for copying to another location.
 - **Paste:** Execute the last *Cut* or *Copy* command, by copying or moving files and/or folders to the currently displayed folder.
 - **Delete:** Permanently remove the selected or marked files and/or folders.
 - **New folder:** Create a new subfolder in the currently displayed folder. This command is available in the menu.
 - **Select drive:** Change the drive whose contents is displayed in the view. This command is available in the main menu, or the drop-down *category menu* in the upper-right part of the screen on phones that support this feature.
-

System view

The System view provides information about the most important characteristics of the phone. The following items are listed:

- *Device*: The IMEI number (unique device identifier) is shown.
- *Time*: The system uptime (elapsed time since the phone was last restarted) is shown.
- *RAM*: The amount of free RAM (operative memory) is shown in Megabytes and percents of the total.
- *Drives*: The amount of free space on Drive C: is shown in Megabytes and percents of the total.
- *CPU*: The speed of the CPU (central processing unit) is shown in Megahertz.
- *Display*: The number of display colors is shown. Note that this value may be different from the true color capability of the screen.
- *Applications*: The number of installed applications is shown.
- *Battery*: Battery level is shown in percentages.
- *Operator*: The name of the current GSM network is displayed.



Commands available for the System view are the following:

- **Details**: Brings up a *System information dialog*, displaying additional details that are related to the item currently selected in the list. You can also tap on an item on the list to display the same detail dialog.
-

Task information dialog

This dialog is accessed by tapping the *Info* button when the *Task view* is displayed. It displays technical information for the selected task, which may be useful for analytical purposes. Tap on any displayed item to bring up an additional dialog that shows the respective item text in full.



File/Folder information dialog

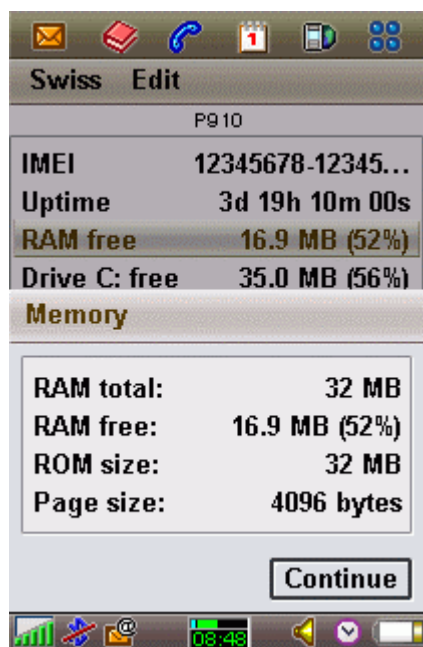
This dialog is accessed by tapping the *Info* button when the *File view* is displayed. It shows detailed information about the selected file or folder.



- To rename the displayed item, change the contents of the *Name* field.
- To adjust time, change the *Time* field's contents.
- To set attributes, use the controls on the *Attributes* tab.
- For drive information, switch to the *Drive* tab.
- To accept changes, press the *Done* button.

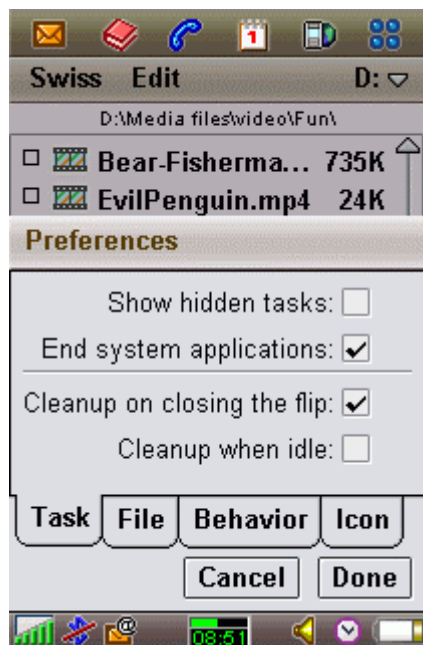
System information dialog

This dialog is accessed by tapping the *Details* button when the *System view* is displayed. It displays further system information related to the selected list item. Tap on any displayed item to bring up an additional dialog that shows the respective item text in full.



Settings - Task

Use the provided options to set the behavior of the task manager.

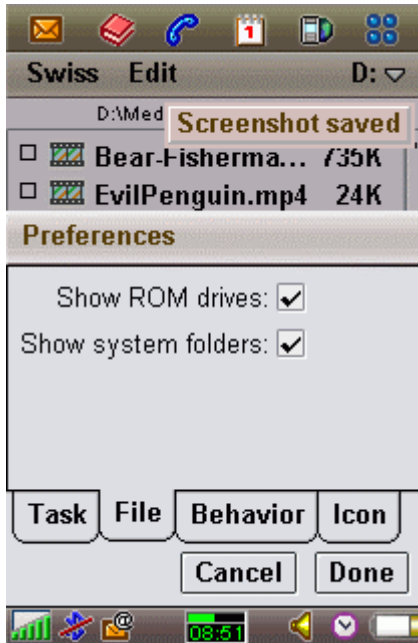


- **Show hidden tasks:** Check the option to display system and hidden tasks in the *Task view*.
- **End system applications:** Check the option to allow manually closing programs that are marked as "system applications". Note that Swiss Manager always refuses closing system tasks that are essential for the phone's normal function. Moreover, automatic cleanup functions never include closing system tasks.

- **Cleanup on closing the flip:** Check the option to instruct Swiss Manager to automatically perform the *End all tasks* command whenever you close the flip. This option is only available on phone models that have a flip keypad.
 - **Cleanup when idle:** Check the option to automatically perform the *End all tasks* command when the default screen is displayed and a certain amount of idle time has elapsed.
 - **Aggressive memory reclaim:** Check the option to use a more forceful method to release memory. When this method is used, the built-in Task Manager application's Recent list will be cleared during the process.
-

Settings - File

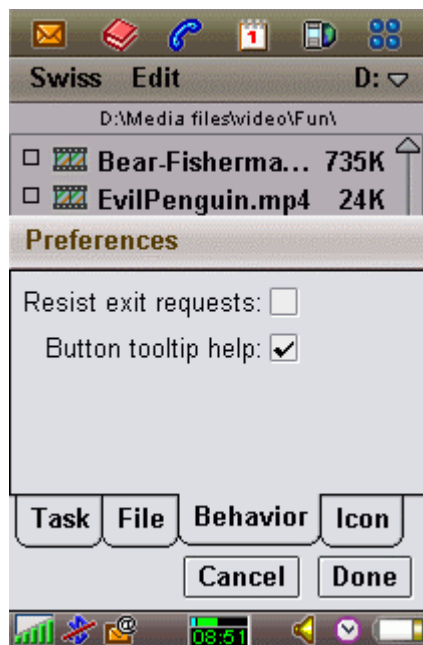
Use the provided options to set the behavior of the file manager.



- **Show ROM drives:** Check the option to have access to read-only drives that are not intended to be visible to users.
 - **Show system folders:** Check the option to include those folders in the file navigator that are not intended for accessing by users.
-

Settings - Behavior

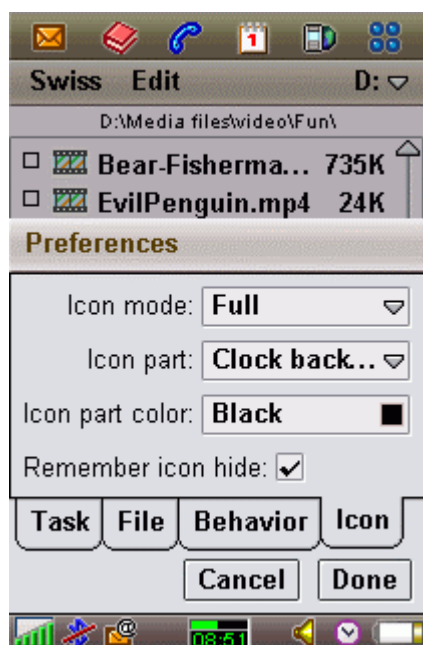
Use the provided options to fine-tune the behavior of Swiss Manager.



- **Resist exit requests:** When this option is checked, Swiss Manager will keep on running when the operating system closes all tasks to free up memory.
- **Button tooltip help:** Check the option to display a short help text when command buttons are pressed.

Settings - Icon

Use the provided options to change the appearance of the *Status icon*.



- **Icon mode:** Select *Full* or *None* to switch displaying the Status icon on or off, respectively.
- **Icon part:** Select the icon component whose color you want to change.
- **Icon part color:** Pick a color for the selected *Icon part*.
- **Remember icon hide:** When this option is checked, Swiss Manager will remember applications over which you hide the *Status icon*, and will hide the icon automatically whenever you bring that application to the foreground.

General

Q: Why do I need Swiss Manager?

A: Swiss Manager provides a combination of system services that are very useful for power users. With Swiss Manager you can perform task and file management operations that far exceed what the built-in programs can do. You can also discover more about your phone's internal features by Swiss Manager's system information services.

Q: How does Swiss Manager differ from other system utilities??

A: With Swiss Manager you have more information and more access to your phone than provided by the built-in task and file manager programs. Swiss Manager offers convenient use and many services that are better than those of comparable third-party utilities.

Q: Which phones is Swiss Manager compatible with?

A: Swiss Manager UIQ2 can be installed and executed on all smartphones running on Symbian 7.x with UIQ 2.x. Such phones include the SonyEricsson P910, P900 and P800, furthermore Motorola and BenQ smartphones.

Q: Can Swiss Manager be automatically started up whenever I turn my phone on?

A: For automatic execution at boot-time you need an autostart utility, like our *BootMan* product.

Q: How do I select list items for actions?

A: In most cases the position of the selection bar is used for identifying list items for subsequent actions. You can also mark one or more items using the stylus. Such marks only take precedence over the highlight selection when the action accepts multiple items *and* there are more than one items marked. To select an item without performing an action, scroll the jog dial or tap on the item's icon.

Q: What all those buttons at the bottom of the screen do?

A: When you tap on them, the buttons display "self-help" for a short time. To see the help without executing the command, tap on the button and then drag the stylus away from the button before releasing it. Once you are familiar with the button commands, you can disable the help in *Settings/Behavior*.

Q: Can I invoke Swiss Manager or its Task menu using a hotkey?

A: Swiss Manager does not offer hotkey invocation. You can use key mapping provided by third-party utilities.

Q: Does Swiss Manager support flip closed mode?

A: Swiss Manager is not visible when the flip keypad is closed.

Status icon

Q: What is the benefit of the Status icon?

A: The Status icon floats over other windows and is always visible on the screen. It shows the current time, furthermore the amount of used RAM and CPU usage. By tapping on the icon the Task menu is displayed, providing instant access to the most important task management functions.

Q: Why does the icon display "8.13" as the time?

A: If your phone is set to 12-hour time display, Swiss Manager distinguishes AM and PM by single and double dots, respectively. That is, "8.13" means 08:13 in the morning, and "8:13" means 20:13 in the evening.

Q: What do the color bars represent on the icon?

A: The green bar shows the amount of used RAM in percentages. The cyan bar (overlaid on the RAM bar) represents CPU usage. You can change these colors in *Settings/Icon*.

Q: Why does the icon sometimes display a red bar?

A: The RAM bar turns red when memory usage exceeds a threshold value, warning you that free memory is low. In this case it is recommended to end unused programs manually. You can also activate automatic cleanup mechanisms in *Settings/Task*.

Q: What is the CPU usage indicator good for?

A: The CPU usage bar on the *Status icon* gives you an idea about how intensely the phone's CPU (microprocessor) is used. By observing the CPU indicator you may be able to notice if a certain application uses a lot of CPU-time, which may lead to draining the battery. See also the next FAQ.

Q: Can I detect if a program uses phone resources excessively?

A: Yes, the CPU indicator of the *Status icon* can pin-point applications that use the CPU exhaustively. Such programs can cause an increase in battery consumption. To estimate CPU usage, bring the application to be tested to foreground and observe the levels shown on the CPU indicator. For comparison, also observe the CPU usage for the idle screen and for CPU-intensive tasks, like displaying an animated .gif image or a video.

Q: Can I change the color of the icon?

A: Use the options in *Settings/Icon* to change the appearance of the *Status icon*. First select the *Icon part* whose color you want to change, then select an *Icon part color*. The icon reacts to your changes, so you can check the effects immediately. To save the changed colors press the *Done* button.

Q: Can I put the icon to another place on screen?

A: To move the *Status icon*, grab it with the stylus and drag to the desired place on screen. When you are satisfied with a final location, you can use the Task menu's *Tools/Lock icon* function to prevent further movements. Note that the icon may change its placement automatically to stay visible when switching screen orientations.

Q: Can I temporarily hide the icon?

A: Yes, using the Task menu's *Tools/Hide icon* function. To unhide the icon, bring Swiss Manager to fore- and then to background.

Q: Can I prevent the icon from conflicting with certain applications?

A: Yes, using the *Settings/Icon/Remember icon hide* option. See also the next FAQ.

Q: What is the "Remember icon hide" option?

A: Some programs may utilize the screen in a way which conflicts with the *Status icon*. In this case you may want to hide the icon automatically whenever such conflicting application is in foreground. When the *Settings/Icon/Remember icon hide* option is on, and you later hide the status icon from its menu, Swiss Manager will remember the application over which the icon was hidden. When you again bring that application to the foreground, the icon will be hidden automatically, and be visible again as soon as you switch to another application. Applications over which the icon is auto-hidden are marked on the Task list by a "⌘" sign after their name. When the selection bar is placed on such an application, the *Reset icon hide* menu item is provided to revert the auto-hide feature.

Task menu

Q: What programs are listed in the Task menu?

A: The bottom part of the *Task menu* lists applications that are currently running. Additional applications are listed in the *Favorites* submenu. Select the respective menu item to switch to a running task or to launch one of the Favorites.

Q: How are the Favorites ordered?

A: Favorites are arranged by usage frequency and last use time, employing a self-learning algorithm. When Swiss Manager is first started up a default Favorites list is provided. Whenever you launch a program (not necessarily from Swiss Manager), it is added to the Favorites. While a program is running it is not listed in Favorites, instead it appears in the running task list at the bottom of the *Task menu*. When however you exit a program, it appears again amongst Favorites, but with a higher ranking than before.

Q: Can I define what programs are listed in Favorites?

A: No, the Favorites are listed automatically according to your usage habits, as described in the previous FAQ. After some time of using the phone, the Favorites list will represent your true favorites.

Q: How can I quickly close the foreground application?

A: Tap on the *Status icon* to bring up the *Task menu*. The uppermost menu item allows you to end the foreground application. Exceptions are essential built-in programs and system applications, unless the *Settings/Task/End system applications* option is activated.

Q: How can I quickly invoke Swiss Manager Pro from any application?

A: Tap on the *Status icon* to bring up the *Task menu*. The bottom menu item switches to Swiss Manager. When Swiss Manager is in foreground, the same menu item places it to background.

Task management

Q: I'm familiar with SMan. How does Swiss Manager compare?

A: SMan is a popular system utility widely used on UIQ2 devices. Swiss Manager has similar task management services with some differences. The comparison table below is intended to help those who are familiar with SMan.

Term used in SMan	Corresponding function in Swiss Manager	Notes
Flush tasks	End all tasks	Same functionality, with optional task exclusion (see below).
Flipclose flush	Cleanup on closing the flip	With Swiss Manager you can perform automatic cleanup also on those phones that have no flip keypad, or when you removed the flip, using the <i>Cleanup when idle</i> option.
Snapshot, Flush exclude	Toggle exclusion	Swiss Manager uses a more straightforward solution instead of the "snapshot". You are in full control in determining which tasks are excluded and included in the <i>End all tasks</i> command, by using the <i>Toggle exclusion</i> button. You also have visual feedback as the excluded tasks are marked by a "#" sign on the task list.
Forced endtask	Kill task	Same functionality.
Compress heap	Reclaim memory	Same functionality.

Q: Can I see hidden programs on the task list?

A: Yes, by activating the *Settings/Task/Show hidden tasks* option. Tasks that are shown by using this option can not be switched to or ended.

Q: What is the difference between "End" and "Kill" a task?

A: The *End task* command requests the application in question to perform its normal shutdown procedure and then to exit gracefully. The *Kill task* command is more forceful, giving less chance for an application to clean up after itself and save its data. Normally always only use the *End task* command. Kill is mainly for "runaway" programs that are impossible to get rid of otherwise.

Q: What happens when I set the "End system applications" option?

A: When the *Settings/Task/End system applications* option is activated then you can manually close programs that are marked as "system" applications. System applications can be closed from the *Task menu* or with the *Task view's End or Kill task* commands. Automatic cleanup functions never include system applications. Also, you can not close those built-in system programs that are essential for the phone's correct function.

Q: What does "Toggle exclusion" mean?

A: When you tap on the *Toggle exclusion* button, the selected application will be excluded from the *End all tasks* command, whether the command is executed manually or during an automatic cleanup. This means you can have automatic cleanup activated but avoid exiting those apps that you want always running. The button itself is a toggle, so you can mark/unmark the selected task. When marked for exclusion, a '#' sign is present after the task's name on the list. The feature is similar to taking a "snapshot" in SMan, but you have full control and visual feedback about exclusions.

Q: Why an asterisk is shown along some of the task list items?

A: The asterisk is shown for those tasks that are marked as "system" applications. Some of these applications are essential for the phone's correct operation, therefore Swiss Manager prevents you end or kill them.

Q: What do the *, # and ⌘ signs mean on the task list?

A: The * sign marks system applications that can not be normally closed. The # sign marks programs that have been excluded from the *End all tasks* command. The ⌘ sign marks programs over which the *Status icon* is automatically hidden.

Q: What is the "Aggressive memory reclaim" option?

A: If you set that option then Swiss Manager uses an alternative, more forceful method for releasing memory.

Q: Can I prevent closing Swiss Manager when memory is low?

A: Yes, by activating the *Settings/Behavior/Resist exit requests* option.

File management

Q: How do I rename a file?

A: Tap on the *File info* button to bring up the *File information* dialog. In the dialog the name of the file or folder is editable. Press the *Done* button to rename the file to the name you entered.

Q: How do I copy or move a file to another location?

A: Select or mark the file(s) and/or folder(s) you want to copy or move. Press the *Copy* button for copy, or the *Cut* button for move. Navigate into the directory that you want to make the target of the operation. Press the *Paste* button to perform the action. Note that the *Cut* operation will delete items from the original location.

Q: How can I create a new folder?

A: The main menu has a *New folder* item. Enter the name for the new folder and press *Done*.

Q: Why do I see a "Viewer not found" message when tapping on a file?

A: For standard media file types your phone has an associated built-in viewer. When such association does not exist for a certain file, a default message is displayed by the operating system.

Q: How can I quickly switch to another drive?

A: Use the *Select drive* menu item or the drop-down *category menu* on the upper-right part of the screen, depending on your phone model.

Q: Why most buttons are disabled when I browse the Z: drive?

A: In your phone there are one or more so-called ROM drives that are read-only. Therefore, any function which includes writing to the file system is disabled when browsing a ROM drive. You can however copy files from a ROM drive and then paste them to another (read-and-write) drive. You can stop listing ROM drives by unchecking the corresponding option in *Settings/File*.

Q: Can I delete a read-only file?

A: To delete a read-only file you first need to clear its read-only flag in the *File information* dialog's *Attributes* tab. The same applies to using the *Cut/Paste* functions.

System information

Q: How can I see the free space on the memory stick?

A: In *System view* select the *Drive C: free* item and tap on it to see further details about your phone's drives, including the available space on the memory stick (Drive D:).

Q: Can I identify the GSM cell where my phone is located?

A: To see the current cell's identifier, display the *System view* and tap on the *Operator* item.

We at CellPhoneSoft hope you enjoy using Swiss Manager, and find it useful in making your smartphone a more convenient device. Thank you for using our product!